

Paper Reference(s) 1BI0/1F  
Pearson Edexcel Level 1/Level 2 GCSE (9–1)

**Biology**  
**PAPER 1**  
**Foundation Tier**

**Tuesday 16 May 2023 – Morning**

**Diagram Booklet**

In the boxes below, write your name, centre number and candidate number.

Surname					
Other names					
Centre Number					
Candidate Number					

## INSTRUCTIONS

There may be spare copies of some diagrams in case you need them.

**THIS DIAGRAM BOOKLET **MUST** BE RETURNED WITH THE  
QUESTION PAPER AT THE END OF THE EXAMINATION.**

## **Contents**

### **Page**

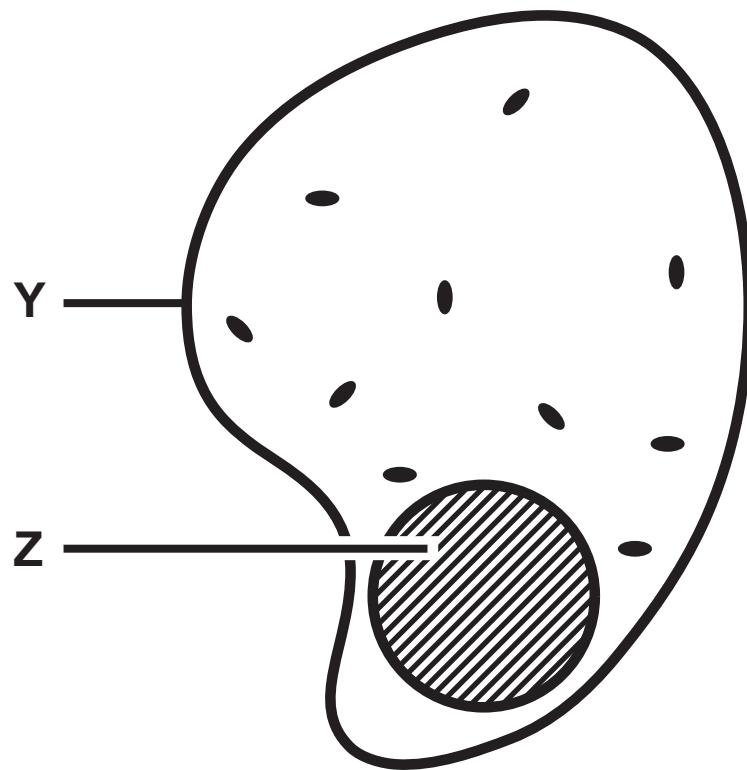
<b>4</b>	<b>Question 1(a)</b>
<b>5</b>	<b>Question 1(b)(i)</b>
<b>6</b>	<b>Question 1(b)(ii)</b>
<b>7</b>	<b>Question 2(a)(i)</b>
<b>8</b>	<b>Question 2(a)(ii)</b>
<b>9</b>	<b>Question 2(b)(i)</b>
<b>10</b>	<b>Question 3(a)</b>
<b>11</b>	<b>Question 4(b)</b>
<b>12</b>	<b>Question 4(c)</b>
<b>13</b>	<b>Question 5(a)</b>
<b>14</b>	<b>Question 5(a)(ii)</b>
<b>15</b>	<b>Question 5(b)</b>
<b>16</b>	<b>Question 6(b)</b>
<b>17</b>	<b>Question 7</b>
<b>18</b>	<b>Question 7(c)(ii)</b>
<b>19</b>	<b>Question 7(d)</b>
<b>20</b>	<b>Question 8(c)</b>
<b>21</b>	<b>Question 9(a)</b>
<b>22</b>	<b>Question 9(c)</b>
<b>23</b>	<b>Question 10(a)</b>
<b>24</b>	<b>Question 10(a)(iii)</b>
<b>25</b>	<b>Question 10(b)</b>
<b>26</b>	<b>Question 10(c)(i)</b>

### **Spare Copies**

<b>27</b>	<b>Question 1(b)(ii)</b>
<b>28</b>	<b>Question 4(c)</b>
<b>29</b>	<b>Question 6(b)</b>

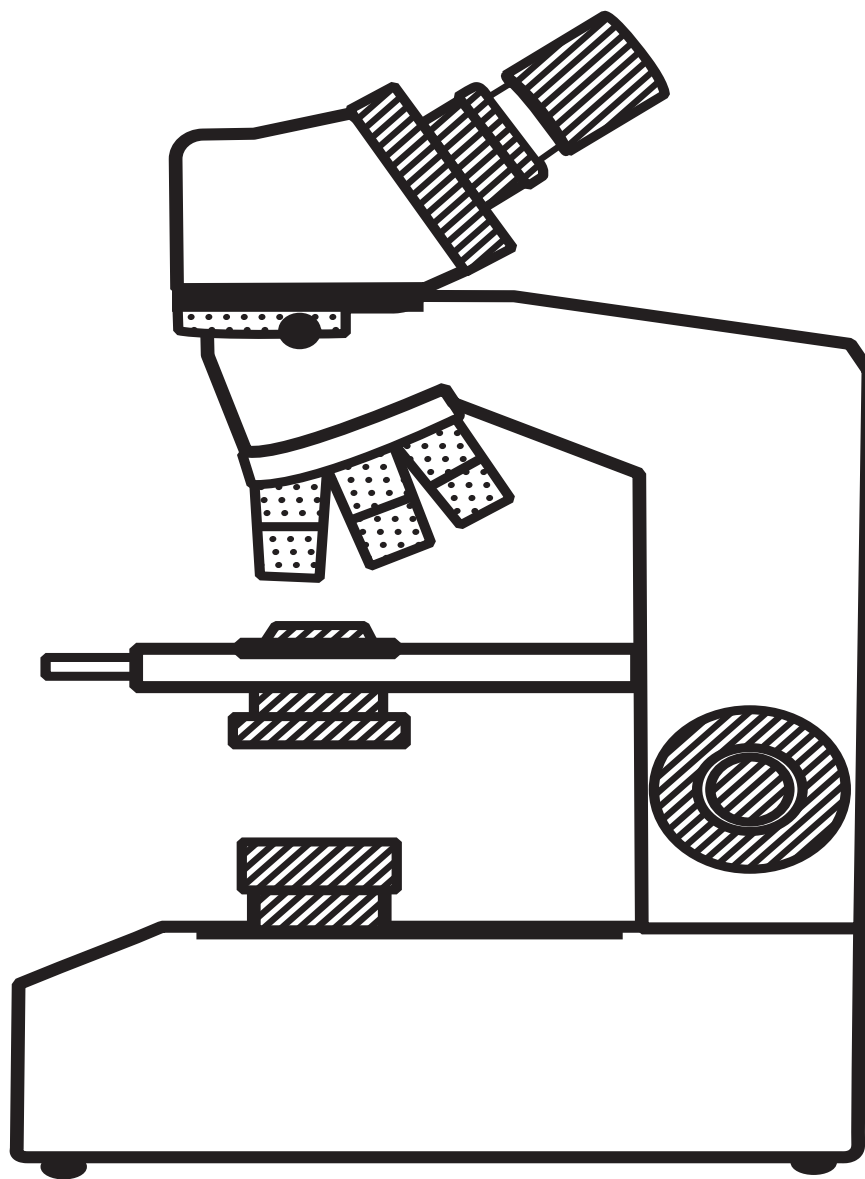
## Question 1(a)

FIGURE 1



## Question 1(b)(i)

FIGURE 2



Question 1(b)(ii)

part of the microscope

eyepiece

stage

function

to place a slide on

to carry the microscope

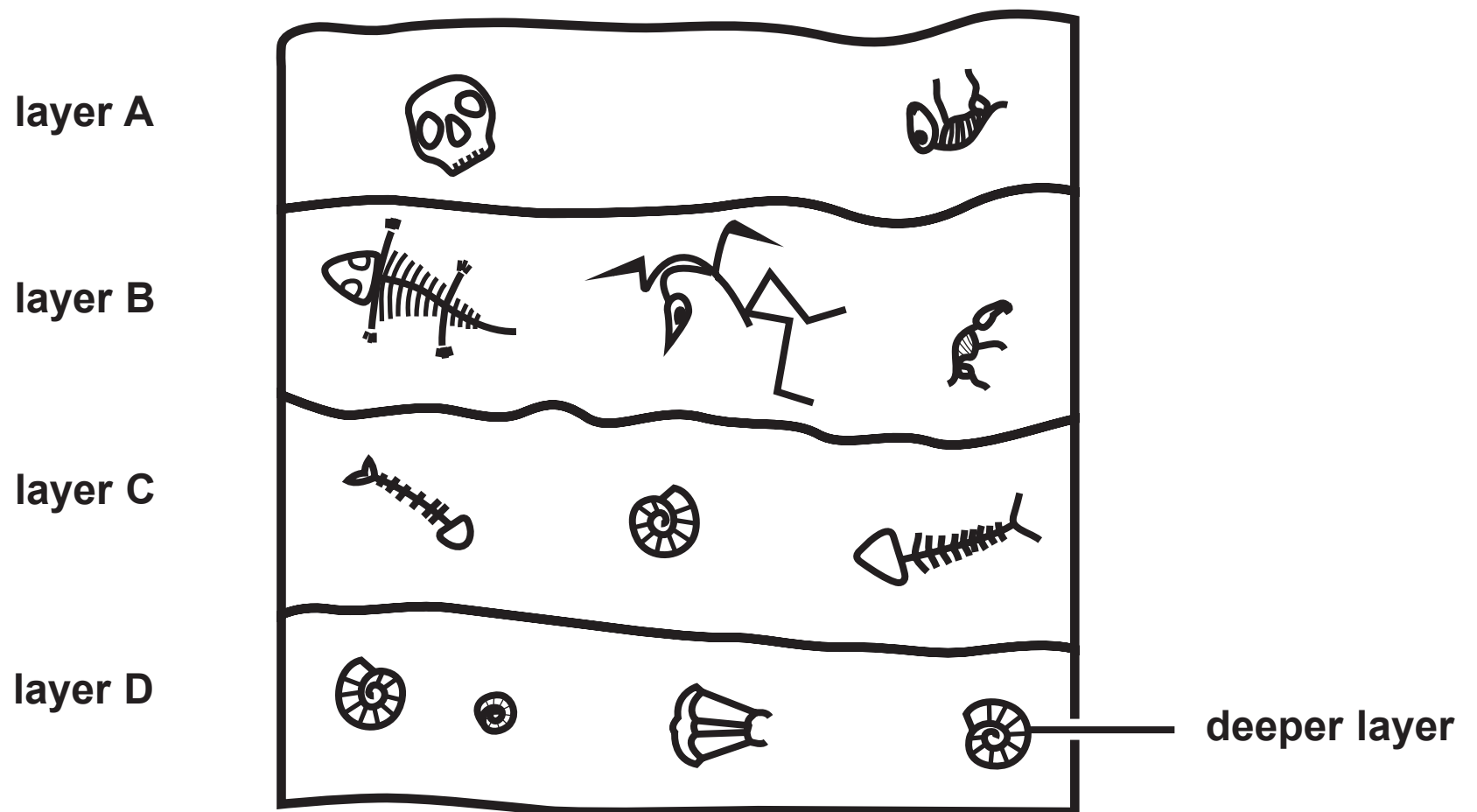
to make the cells look brighter

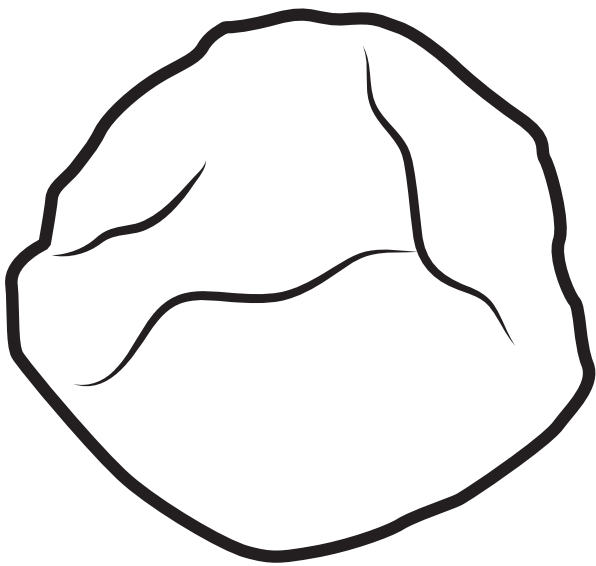
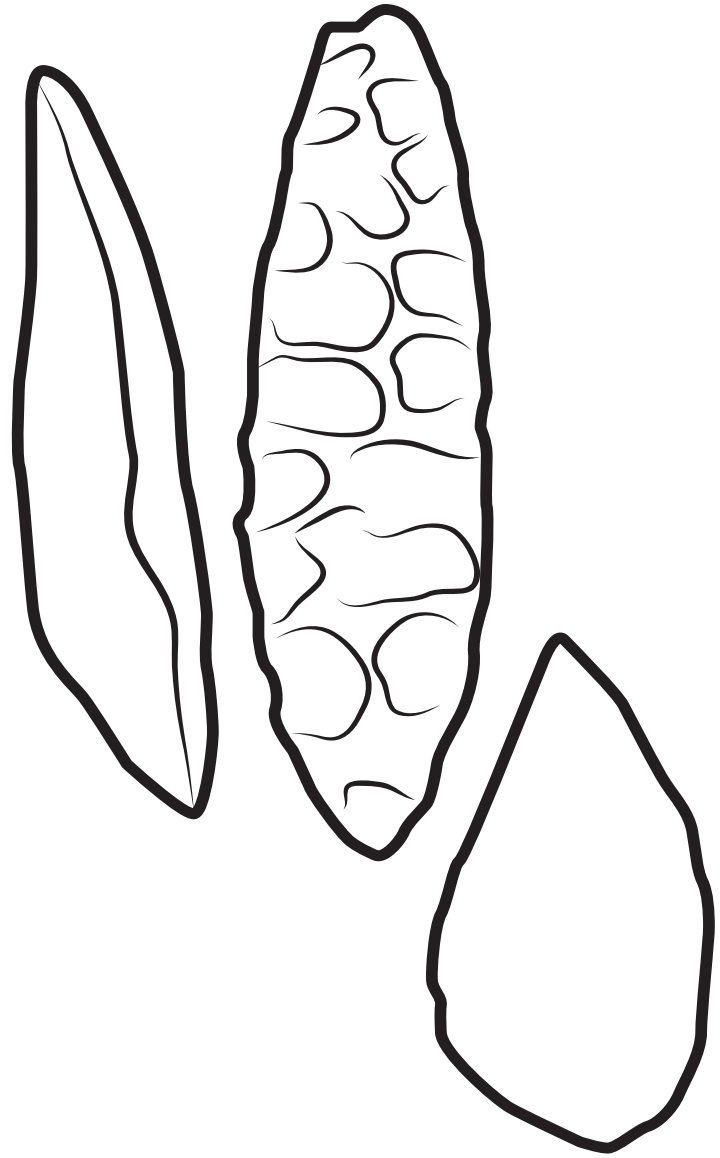
to look through to see the cells

to reflect light onto the cells

## Question 2(a)(i)

FIGURE 4



**Question 2(a)(ii)****FIGURE 5****tool A****tools B, C and D**



**Question 2(b)(i)**

**asexual**

**characteristics**

**evidence**

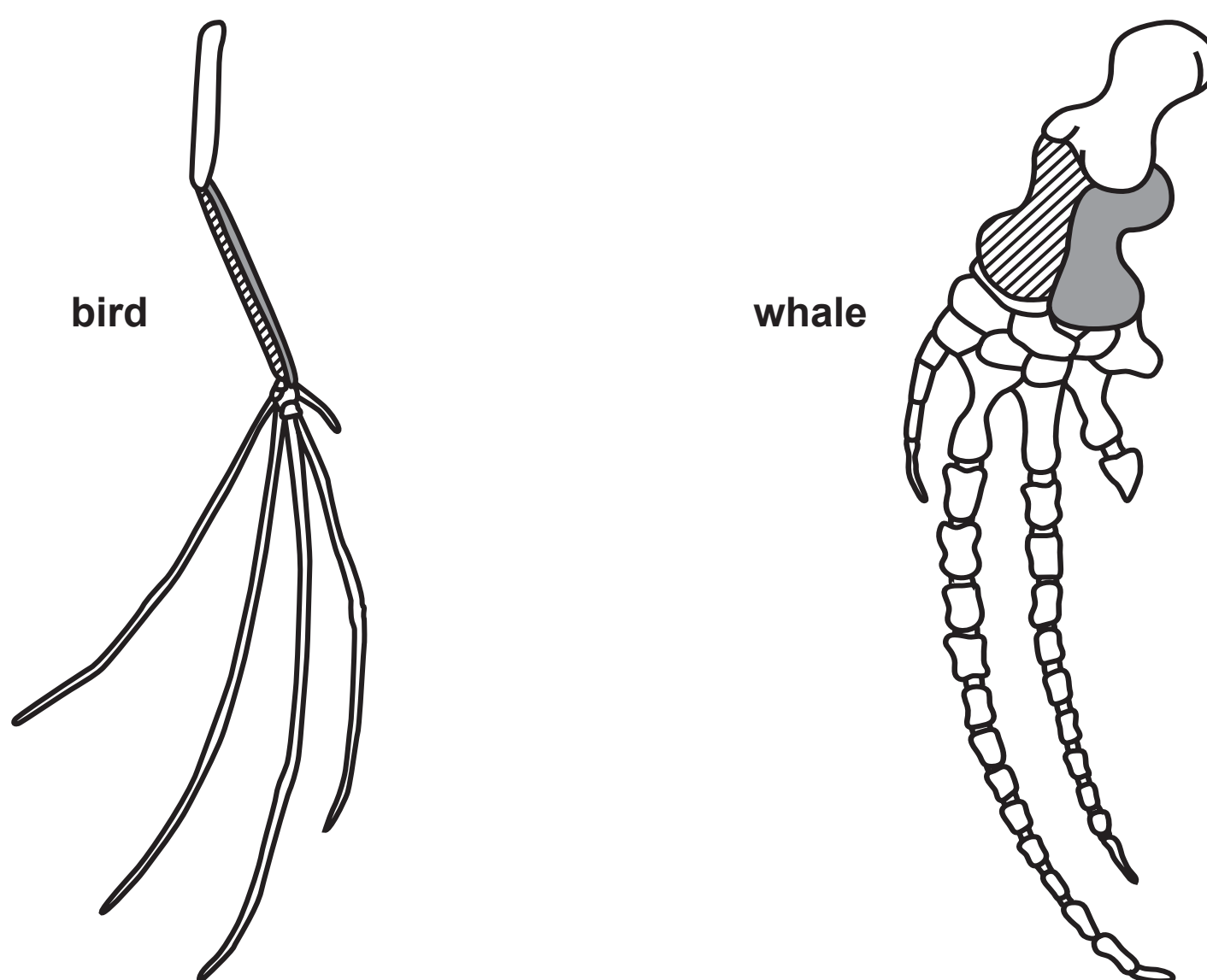
**ideas**

**inherited**

**selective**

## Question 3(a)

FIGURE 6



Question 4(b)

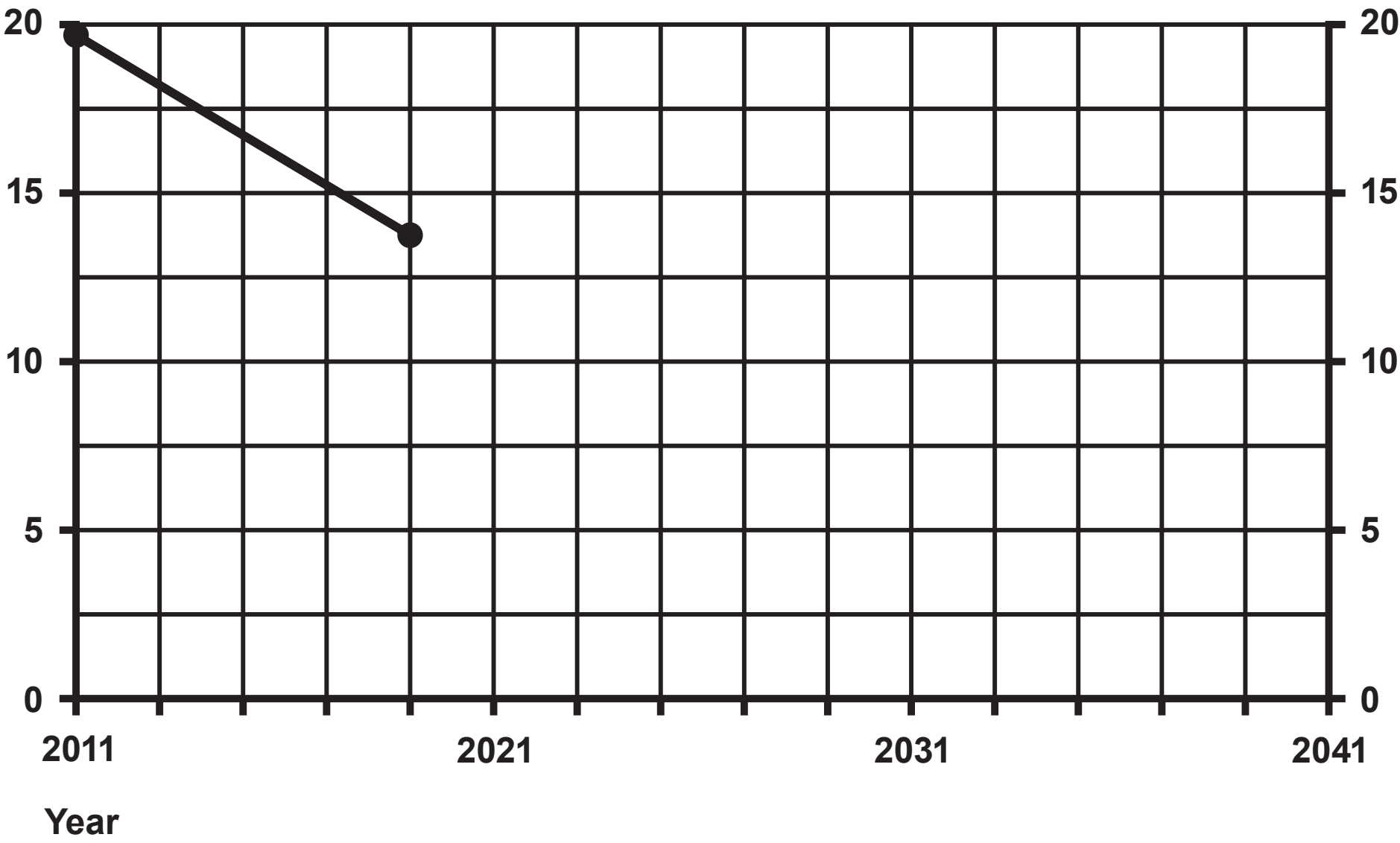
FIGURE 7

BMI range	weight description
18·5 to 24·9	healthy weight
25·0 to 29·9	overweight
30·0 to 39·9	obese
40 or more	severely obese

Question 4(c)

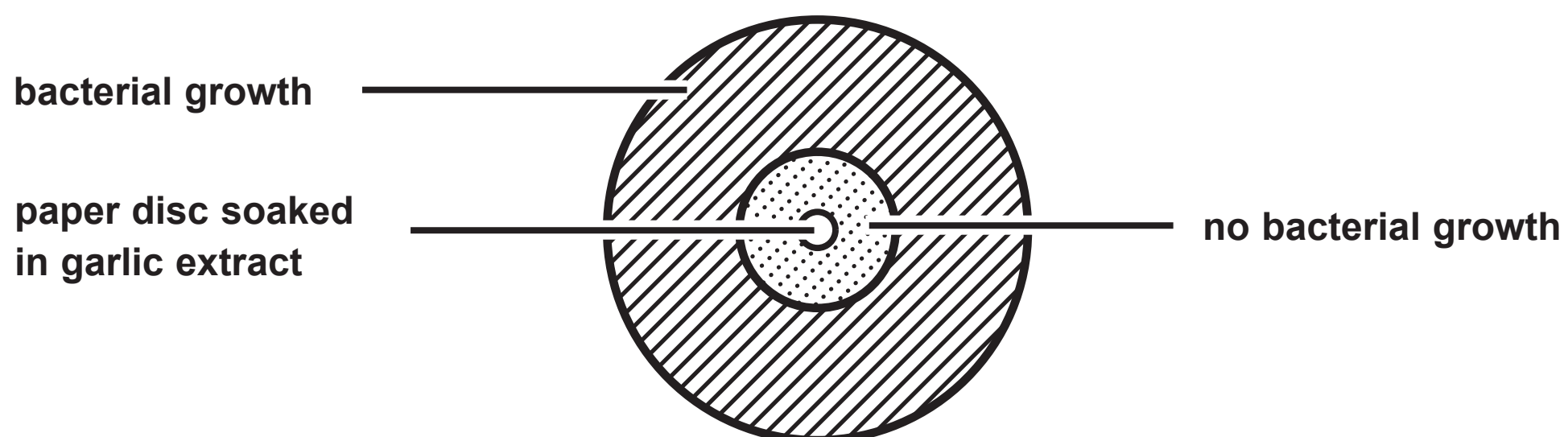
FIGURE 8

Percentage  
of people  
who smoke  
cigarettes



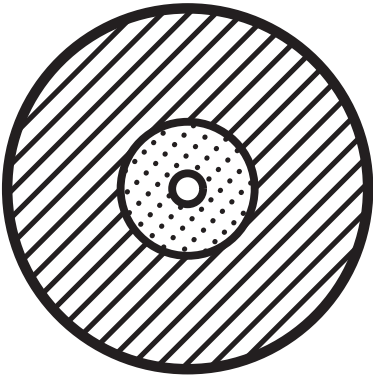
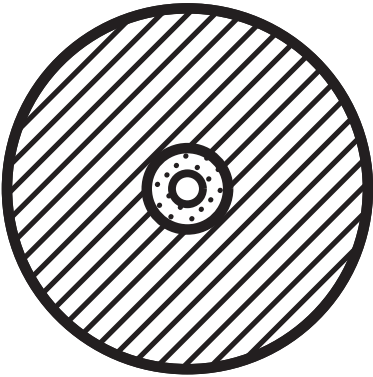
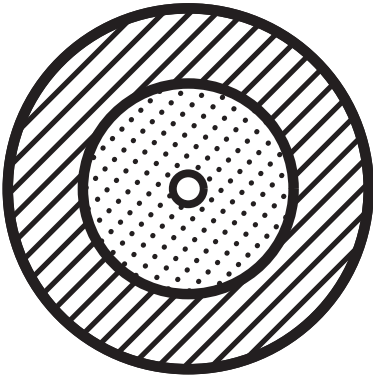
## Question 5(a)

FIGURE 9



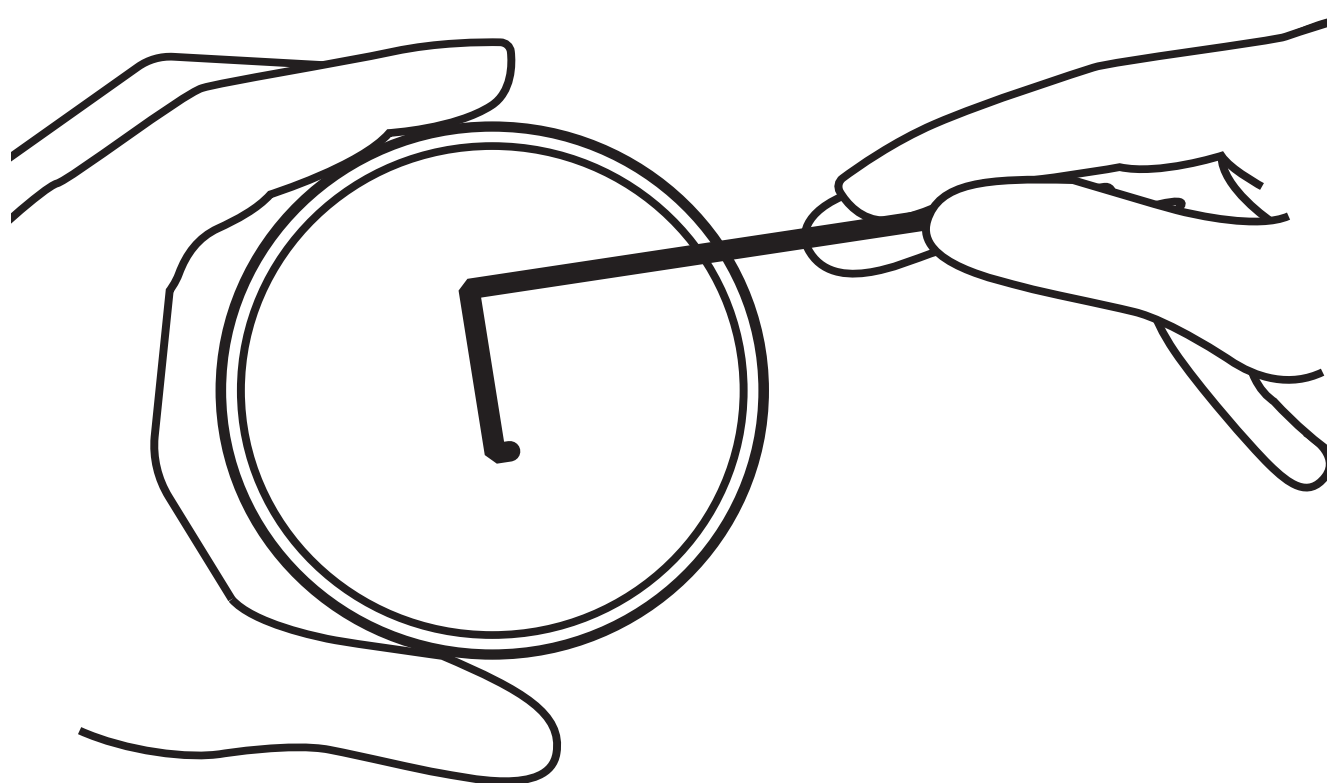
Question 5(a)(ii)

FIGURE 10

appearance of the agar plates after 24 hours		
A	B	C
		

## Question 5(b)

FIGURE 11



Question 6(b)

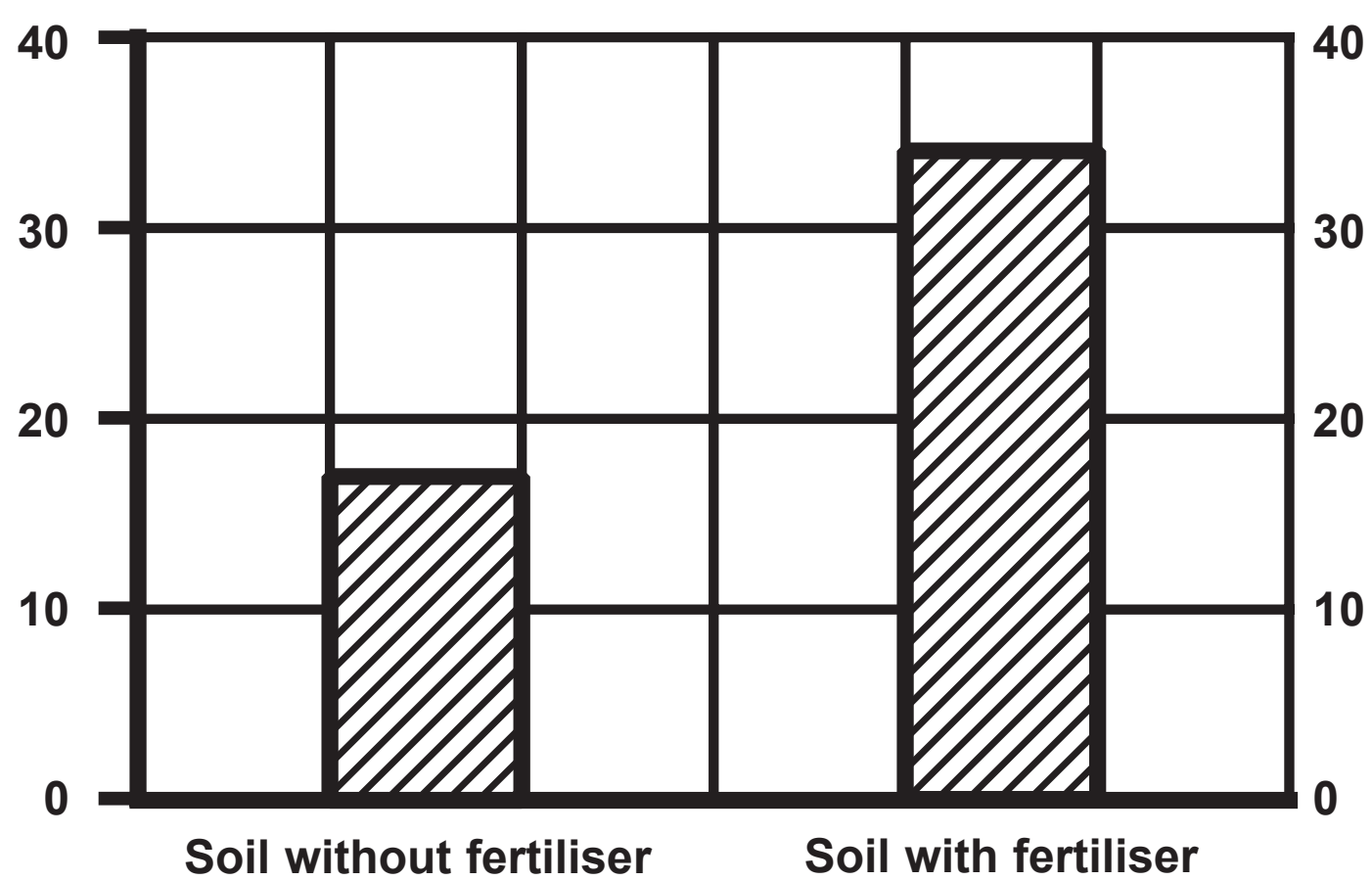
		wrinkled seeds	
round seeds	R		
	r		



## Question 7

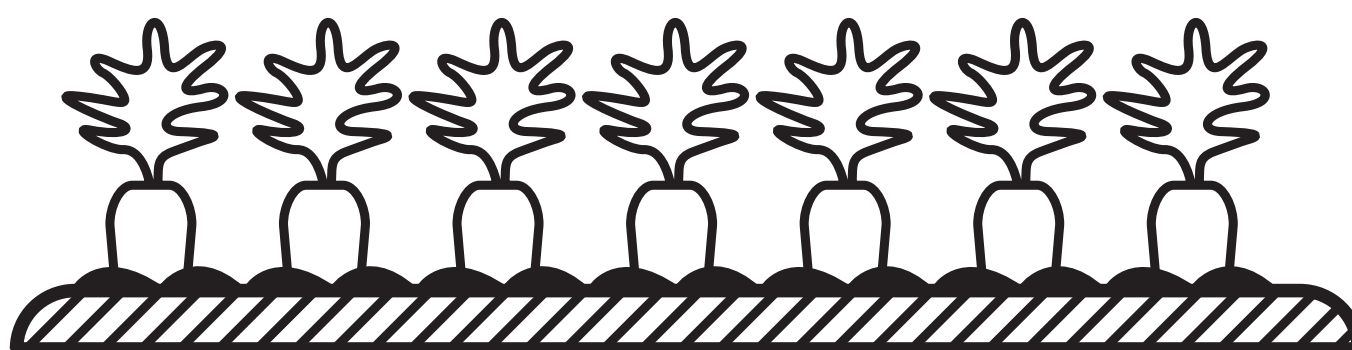
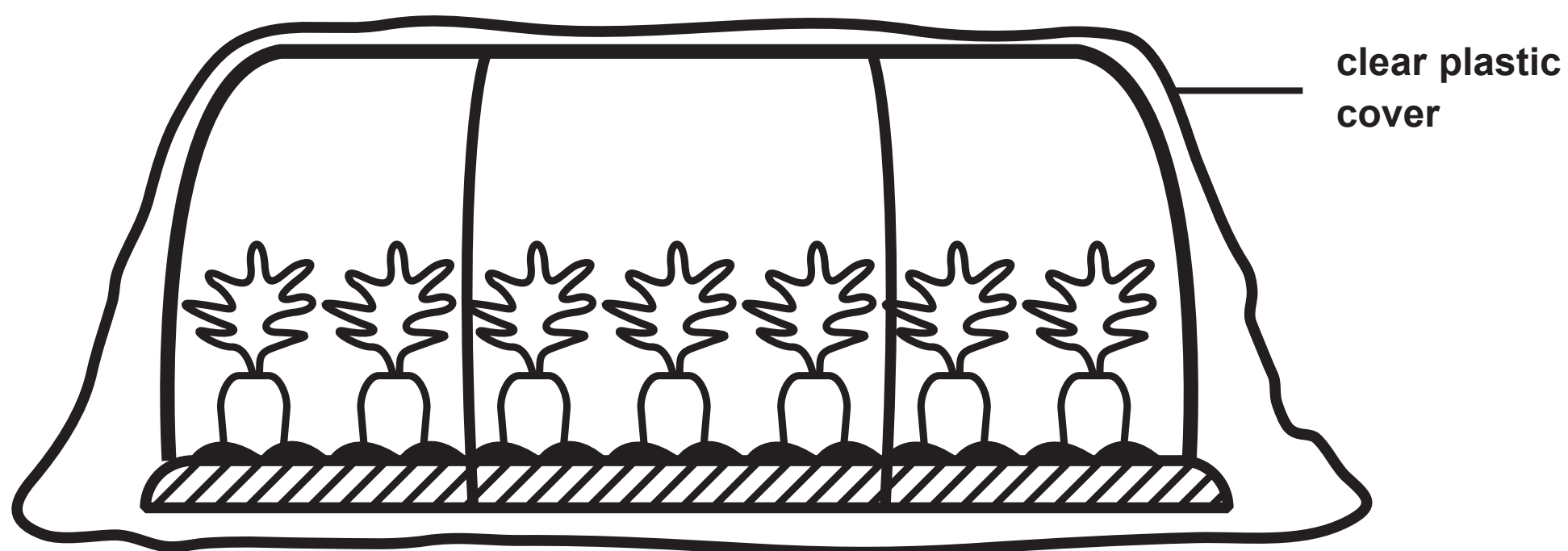
FIGURE 13

Mass of 1000  
grains in g



## Question 7(c)(ii)

FIGURE 14



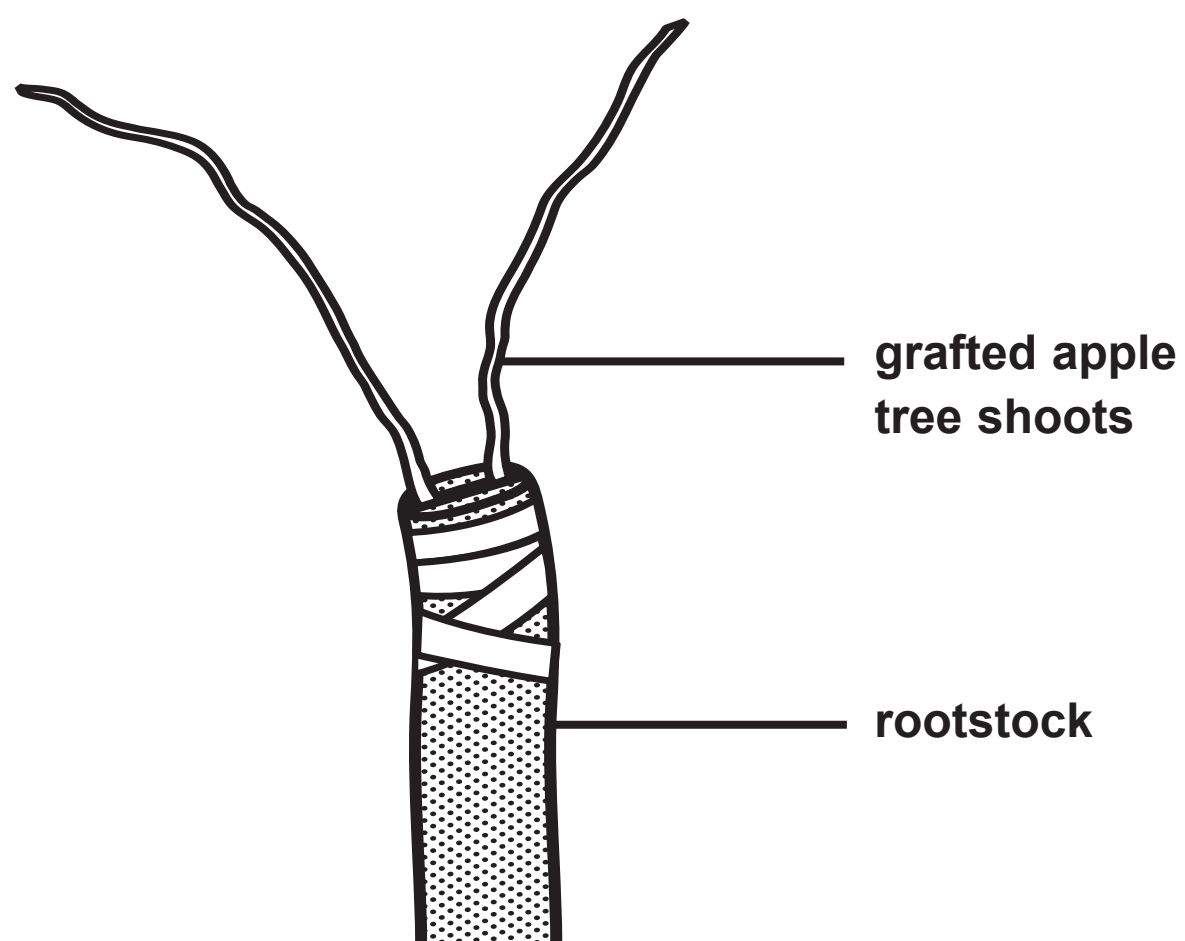
**FIGURE 15**

The black and white photograph shows an adult maggot and a maggot larva feeding on rotting corn.



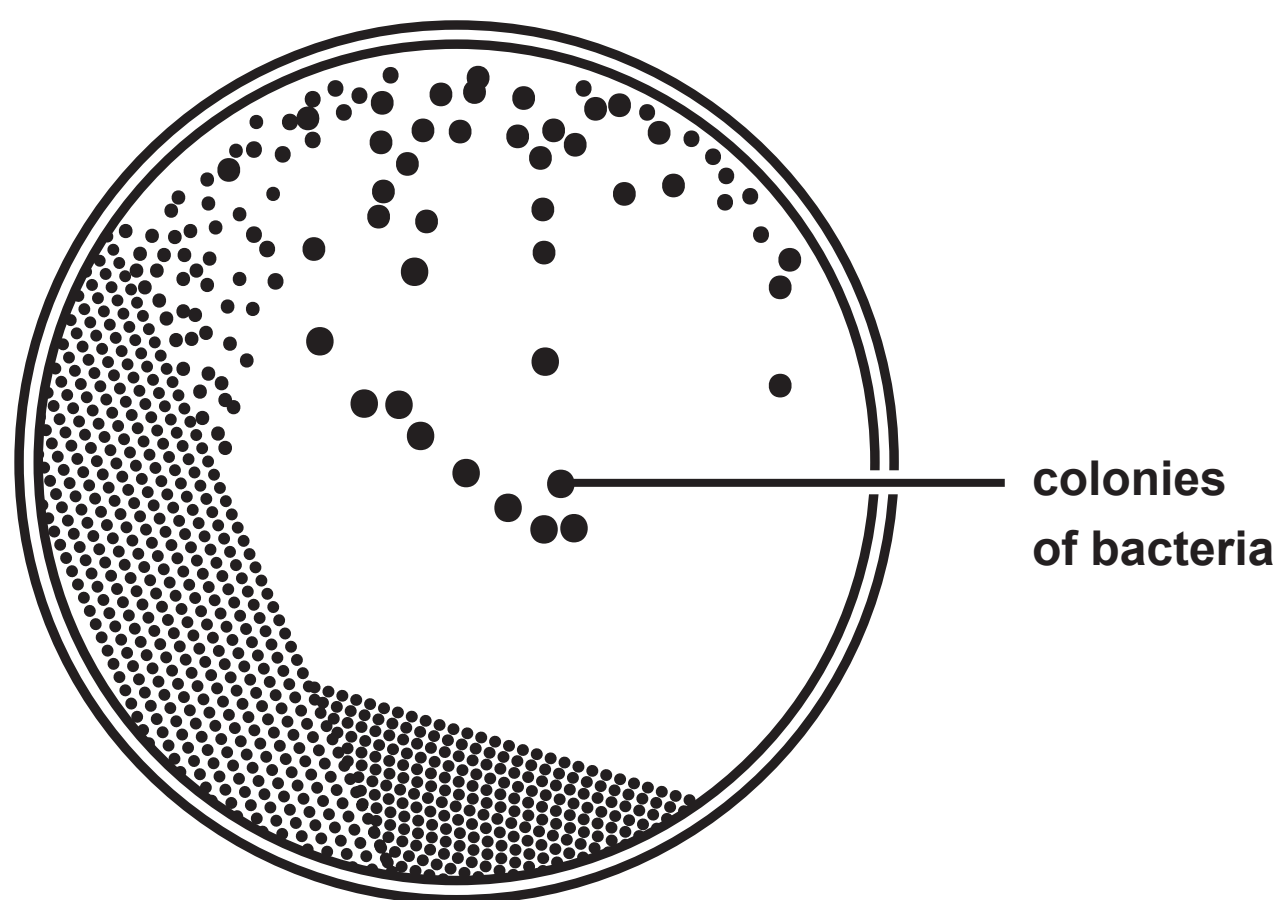
## Question 8(c)

FIGURE 16



## Question 9(a)

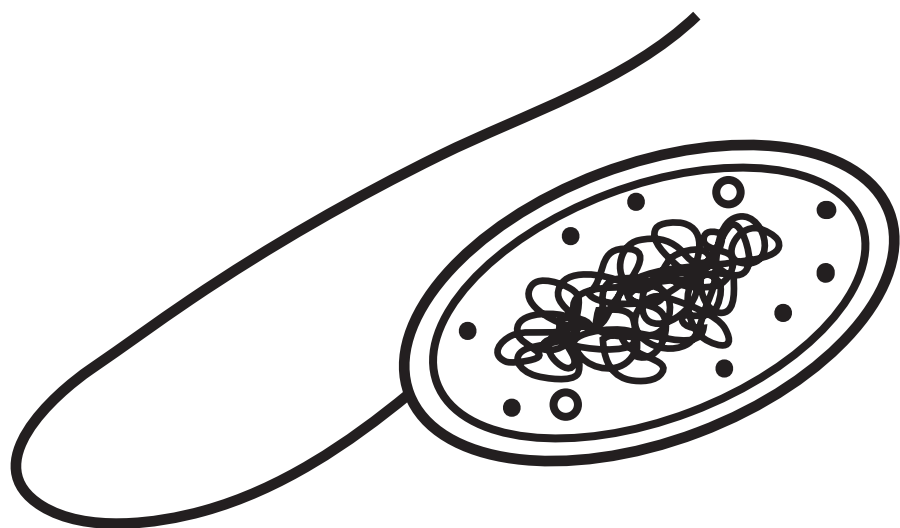
FIGURE 17



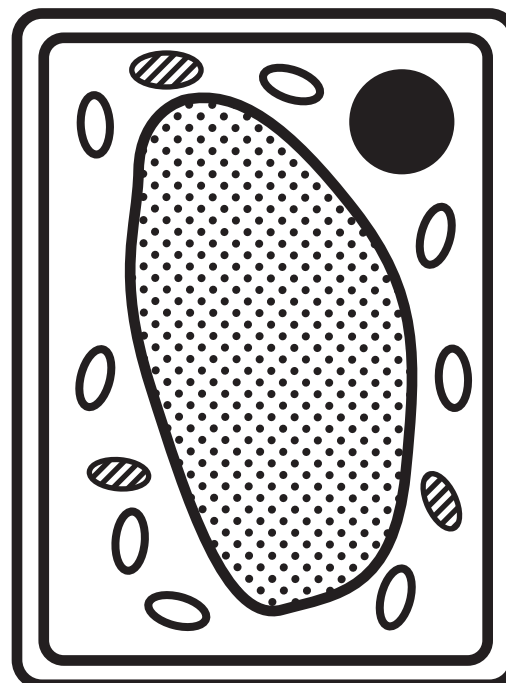
## Question 9(c)

FIGURE 18

bacterial cell



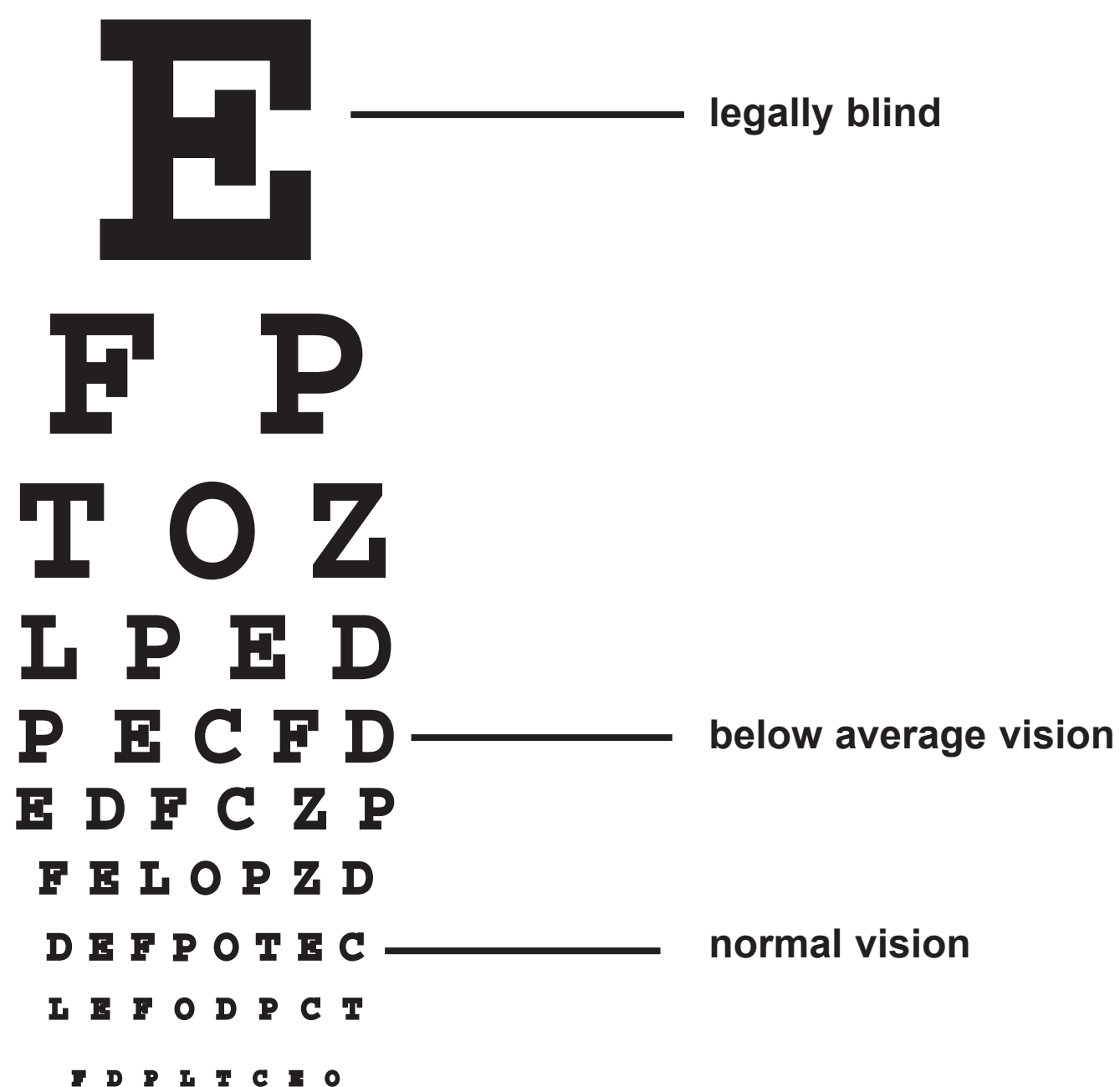
plant cell



## Question 10(a)

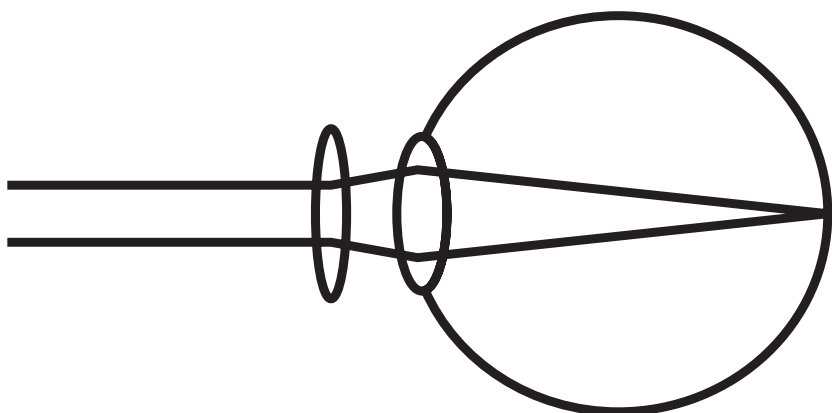
The image shows a reading chart in order of size, becoming progressively smaller. From top to bottom: very large print with a single letter to fine print with 8 letters.

FIGURE 19

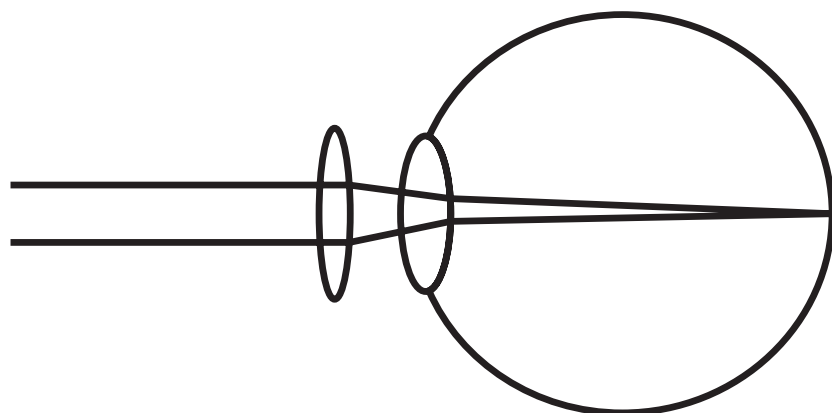


## Question 10(a)(iii)

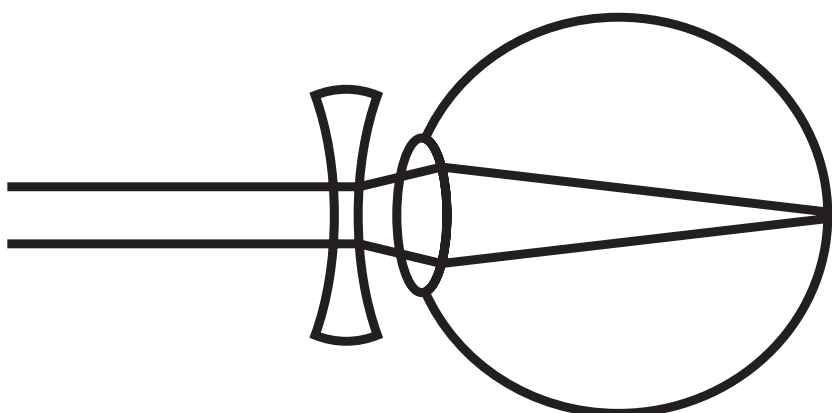
A



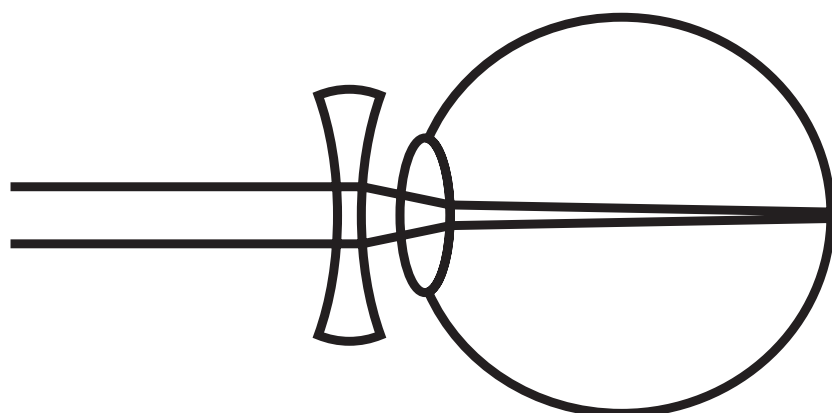
B



C



D





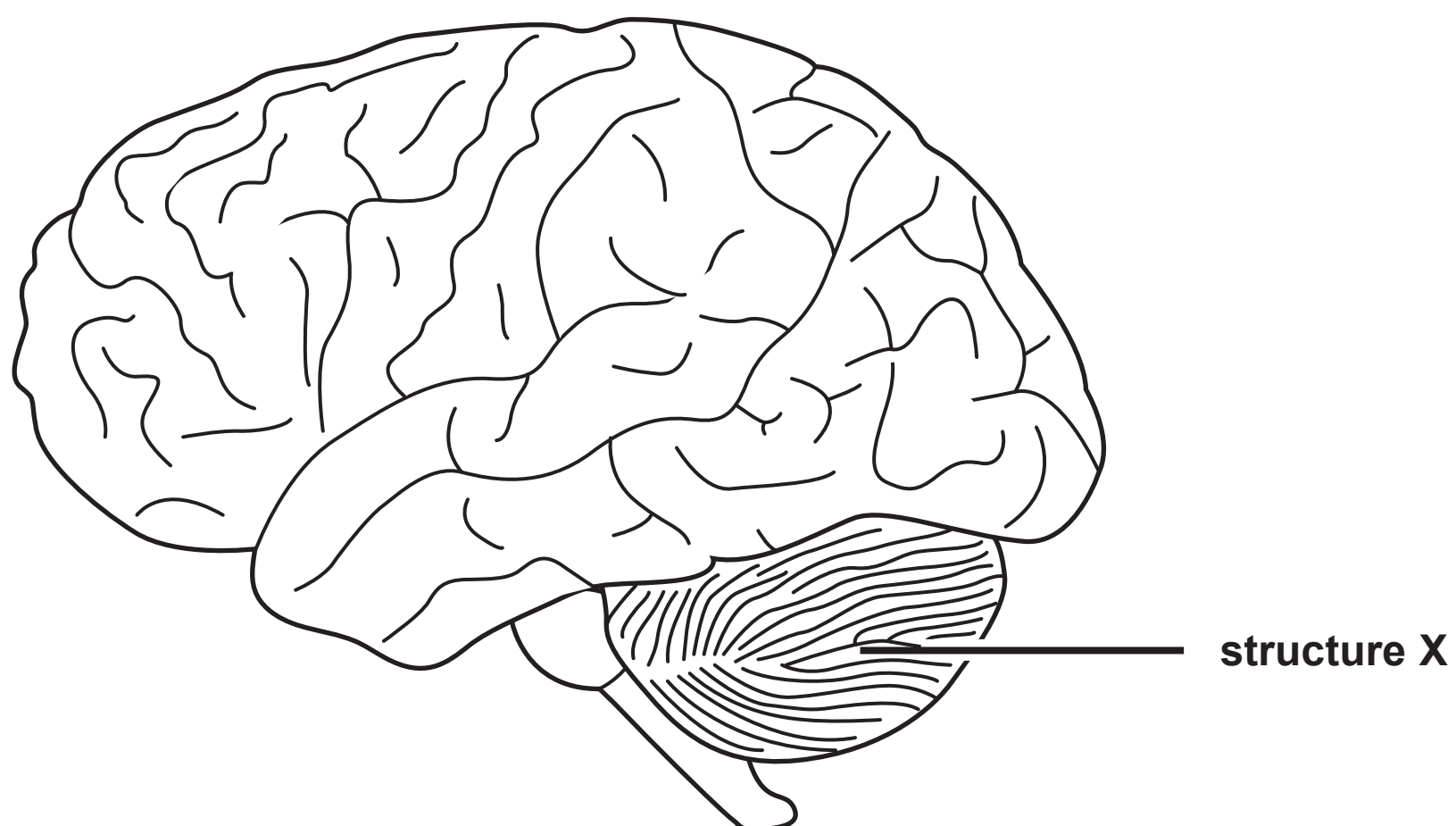
**Question 10(b)**

Two images of block capital letter 'E' side by side. Person with normal vision is shown as a solid, legible letter 'E' with no defects. Person with cataracts is shown as a strongly blurred image, the letter is smaller than at normal vision, with the four corners of the letter the most defined areas.

**FIGURE 20****person with normal vision****person with cataracts**

## Question 10(c)(i)

FIGURE 21



## Question 1(b)(ii)

part of the microscope

eyepiece

stage

function

● to place a slide on

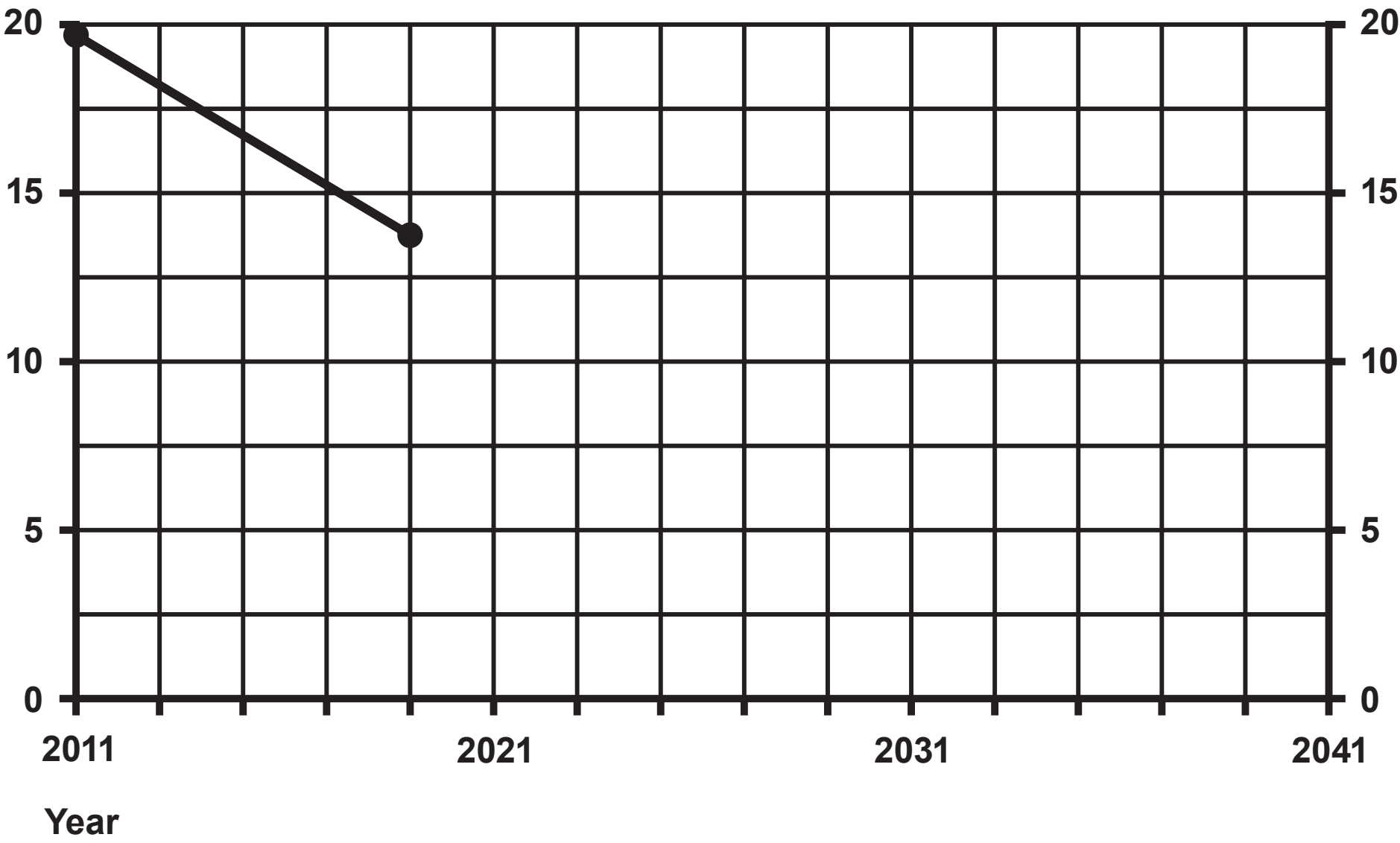
● to carry the microscope

● to make the cells  
look brighter● to look through to  
see the cells● to reflect light onto  
the cells

Question 4(c)

FIGURE 8

Percentage  
of people  
who smoke  
cigarettes



Question 6(b)

		wrinkled seeds	
round seeds	R		
	r		

**Question 1(b) : Adapted from © RouDhi/Shutterstock**

**Question 2(a)(ii): Adapted from © Yes058 Montree Nanta/Shutterstock**

**Question 5(b) : Adapted from © Chatchouliya/Shutterstock**

**Question 7(d) : © Tomasz Klejdysz/Shutterstock**

**Question 8(c) : Adapted from © ATTILA Barsan/Shutterstock**

**Question 9(a) : Adapted from © Chatchouliya/Shutterstock**